

PROVISOIRE
13.12.24

3A

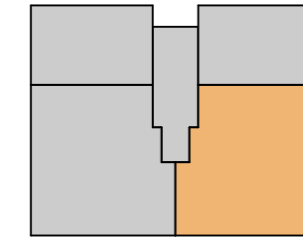
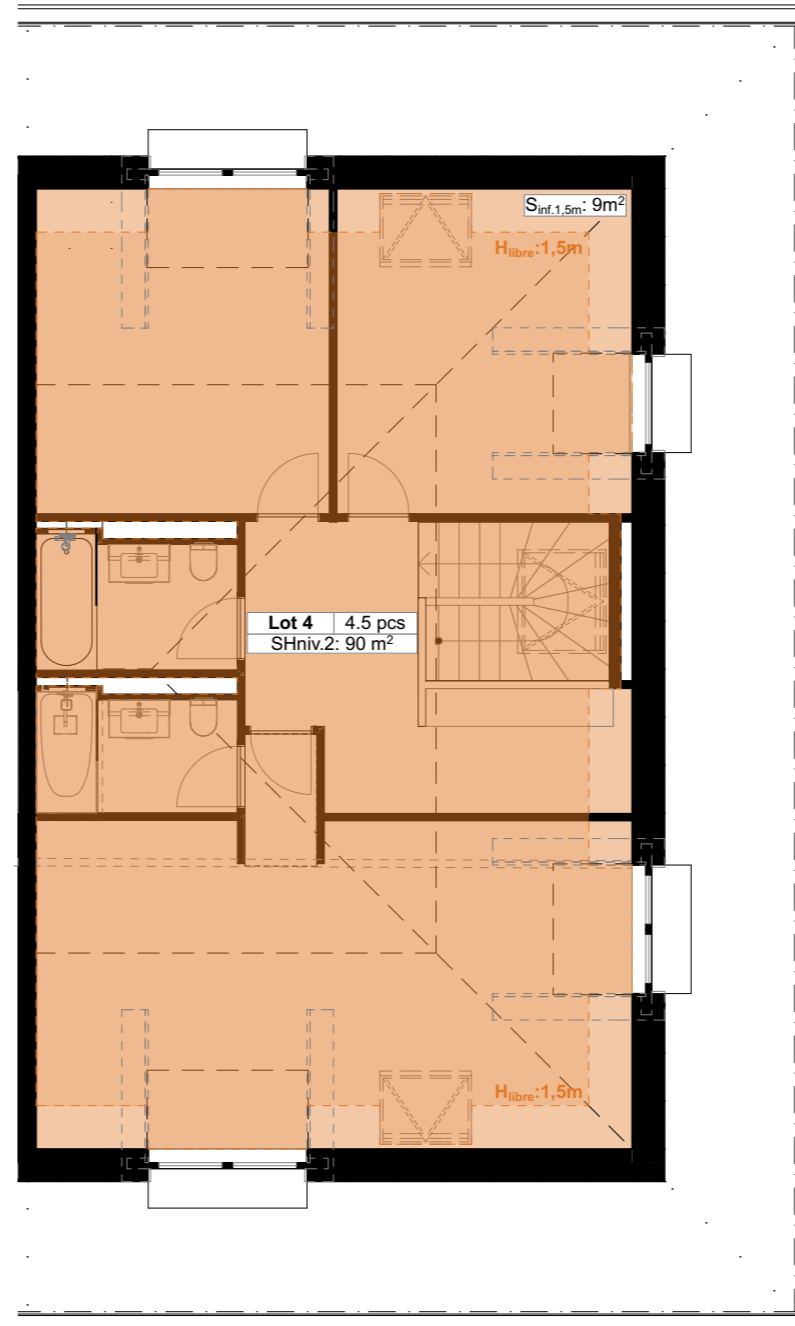
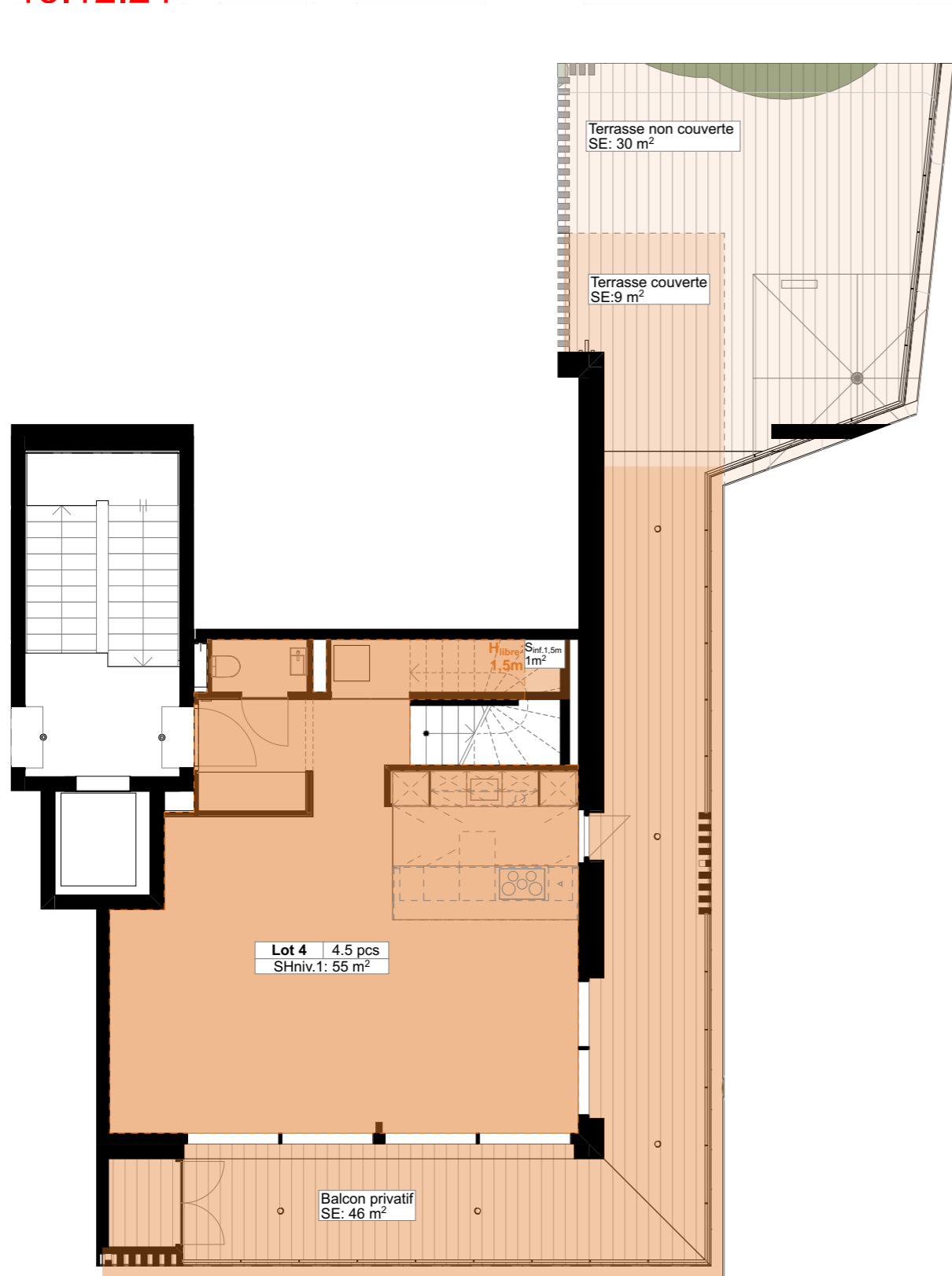
AVENUE FELIX CORNU 16, CORSEAUX

PLANS PPE _ LOT 4

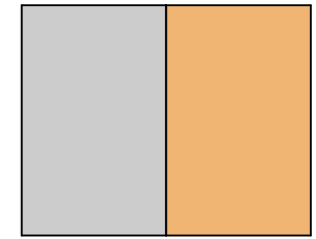


PROVISOIRE
13.12.24

LOT 4 - 1^{ER} ETAGE & COMBLES - 4.5^{PCS}



Niveau 1



Niveau Combles

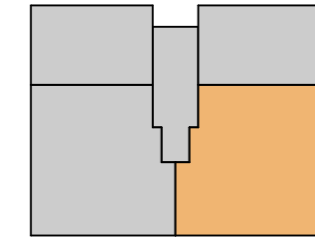
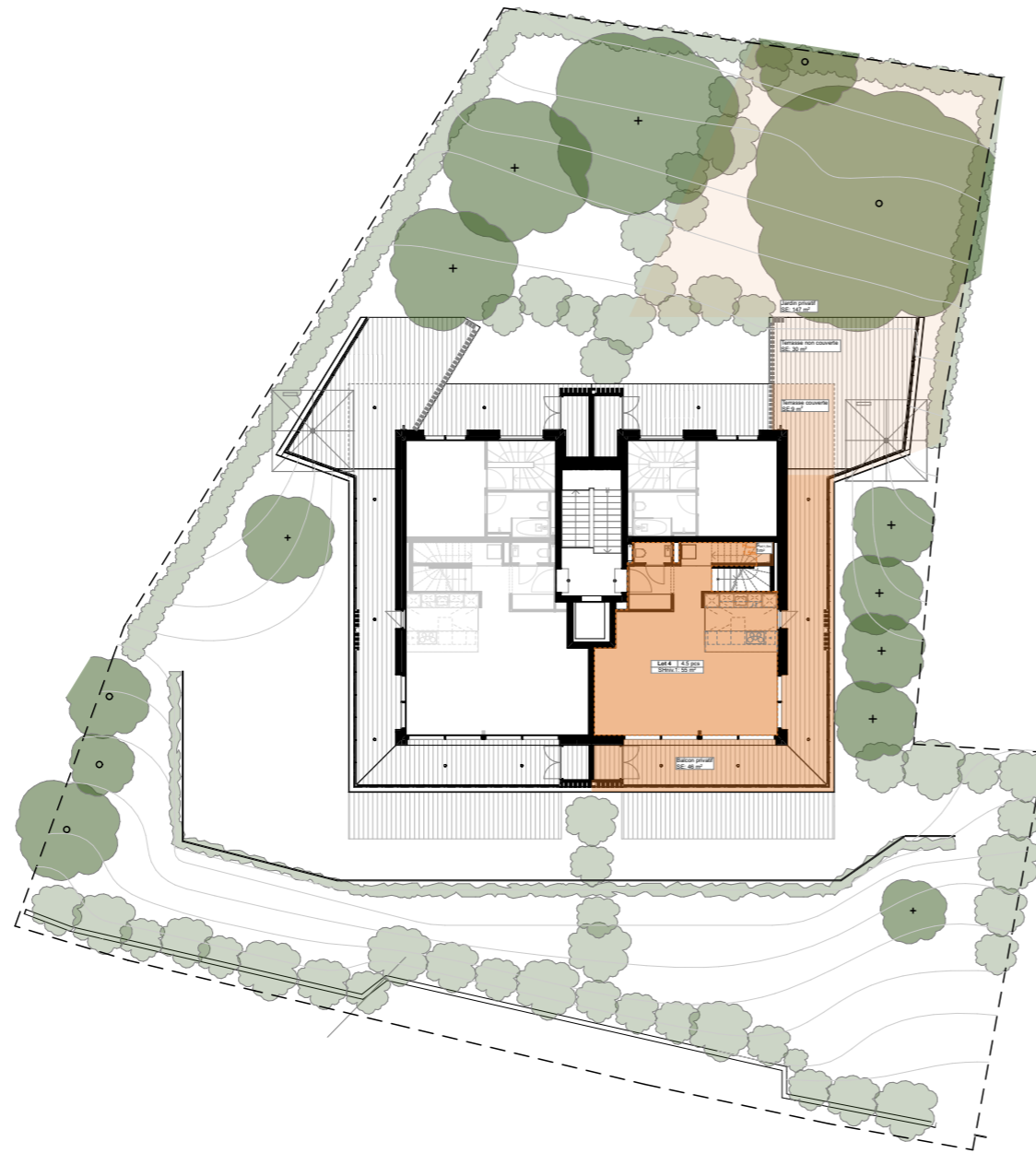
Appartement SH	55 + 90 = 145m²
Surface au sol	55 + 1 + 90 + 9 = 155m²
Terrasse couverte	9 m ²
Terrasse non couverte	30 m ²
Balcon	46 m ²
Jardin	147 m ²
Dépôt	28 m ²
Box vélos	19 m ²
Parking	2 pl. + 2 pl.
Surface de vente pondérée SVP	200,5 m²
Surface totale	434,0 m²



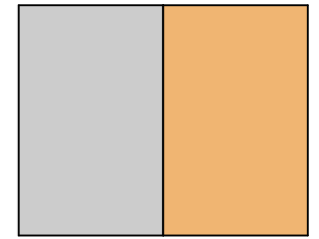
1m 5m

PROVISOIRE
13.12.24

LOT 4 - 1^{ER} ETAGE & COMBLES - 4.5^{PCS}



Niveau 1



Niveau Combles

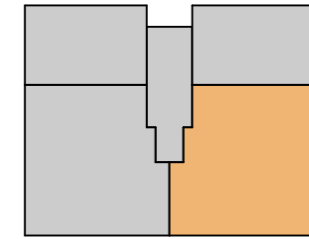
Appartement SH	145m ²
Surface au sol	155m ²
Terrasse couverte	9 m²
Terrasse non couverte	30 m²
Balcon	46 m²
Jardin	147 m²
Dépôt	28 m ²
Box vélos	19 m ²
Parking	2 pl. + 2 pl.
Surface de vente pondérée SVP	200,5 m²
Surface totale	434,0 m²



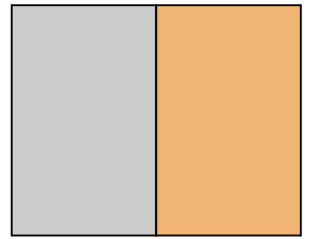
1m 10m

PROVISOIRE
13.12.24

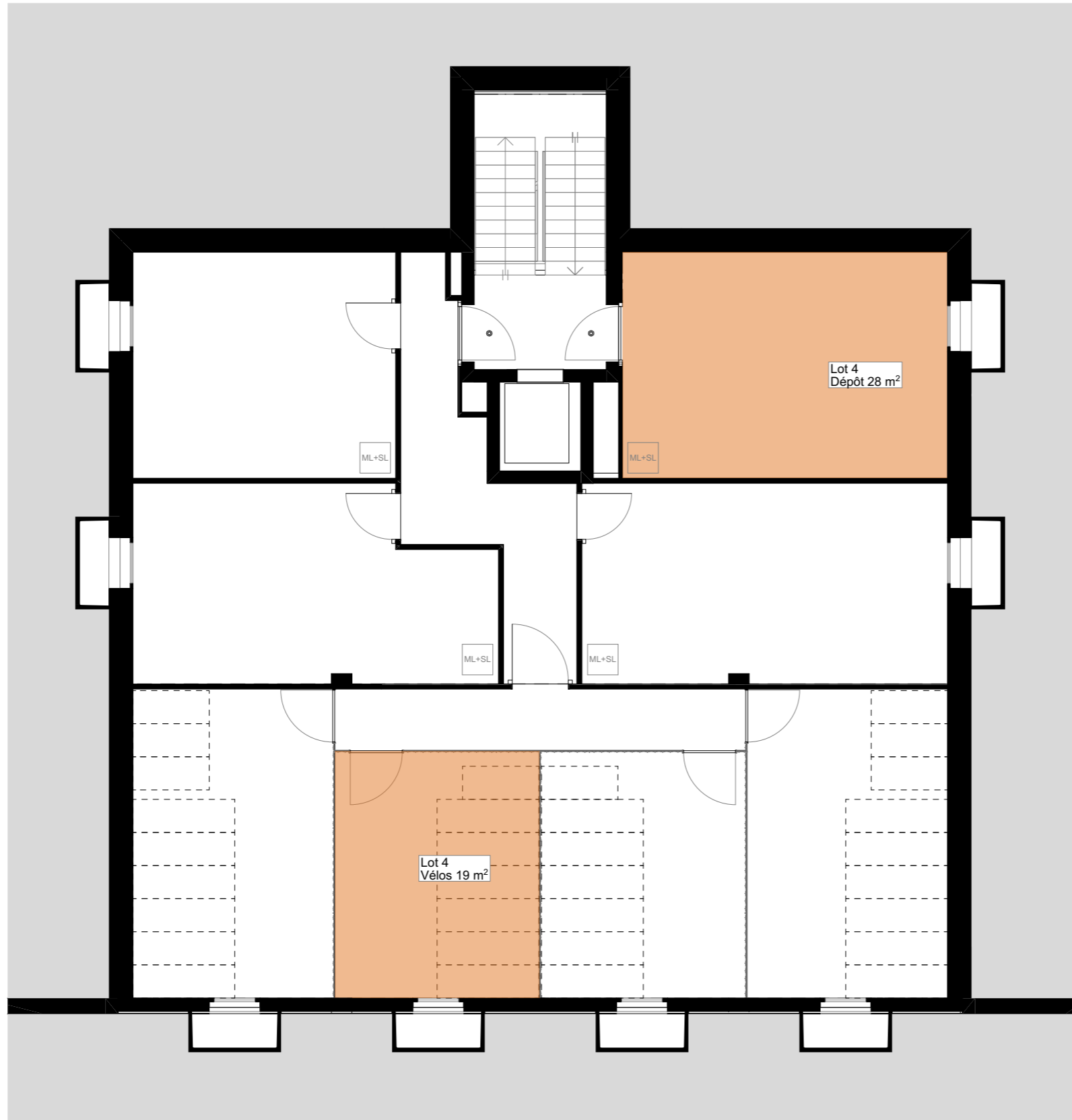
LOT 4 - 1^{ER} ETAGE & COMBLES - 4.5^{pcs}



Niveau 1



Niveau Combles



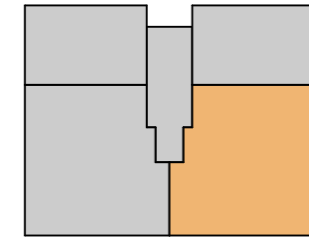
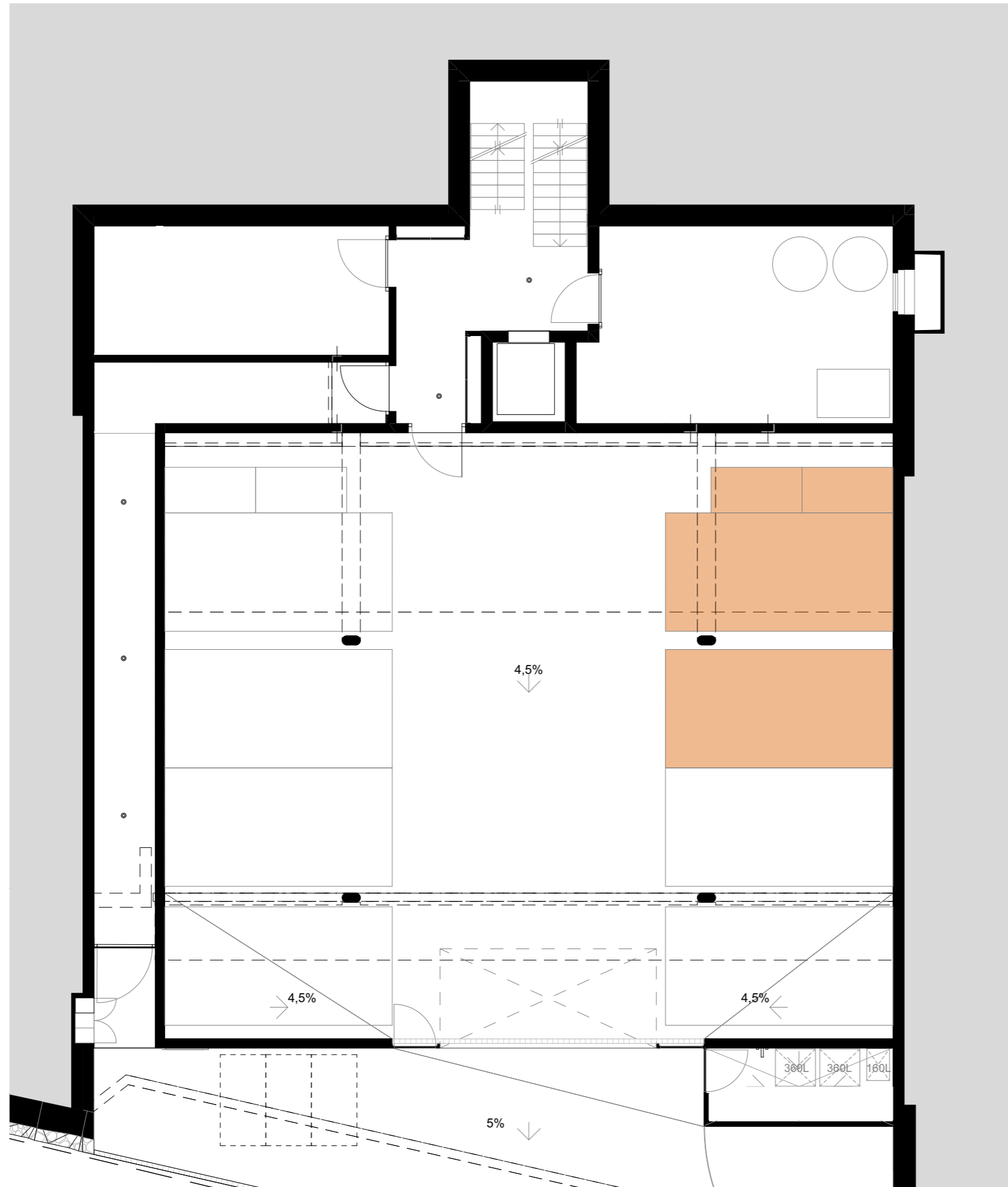
Appartement SH	145m ²
Surface au sol	155m ²
Terrasse couverte	9 m ²
Terrasse non couverte	30 m ²
Balcon	46 m ²
Jardin	147 m ²
Dépôt	28 m²
Box vélos	19 m²
Parking	2 pl. + 2 pl.
Surface de vente pondérée SVP	200,5 m²
Surface totale	434,0 m²



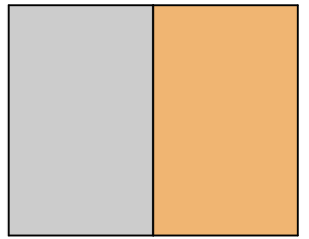
1m 5m

PROVISOIRE
13.12.24

LOT 4 - 1^{ER} ETAGE & COMBLES - 4.5^{pcs}



Niveau 1



Niveau Combles

Appartement SH	145m ²
Surface au sol	155m ²
Terrasse couverte	9 m ²
Terrasse non couverte	30 m ²
Balcon	46 m ²
Jardin	147 m ²
Dépôt	28 m ²
Box vélos	19 m ²
Parking	2 pl. + 2 pl. moto
Surface de vente pondérée SVP	200,5 m ²
Surface totale	434,0 m ²



1m 5m

PROVISOIRE
13.12.24

Vivez l'exception à Corseaux

