

PROVISOIRE  
13.12.24

3A

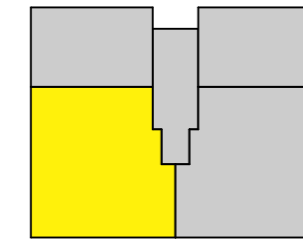
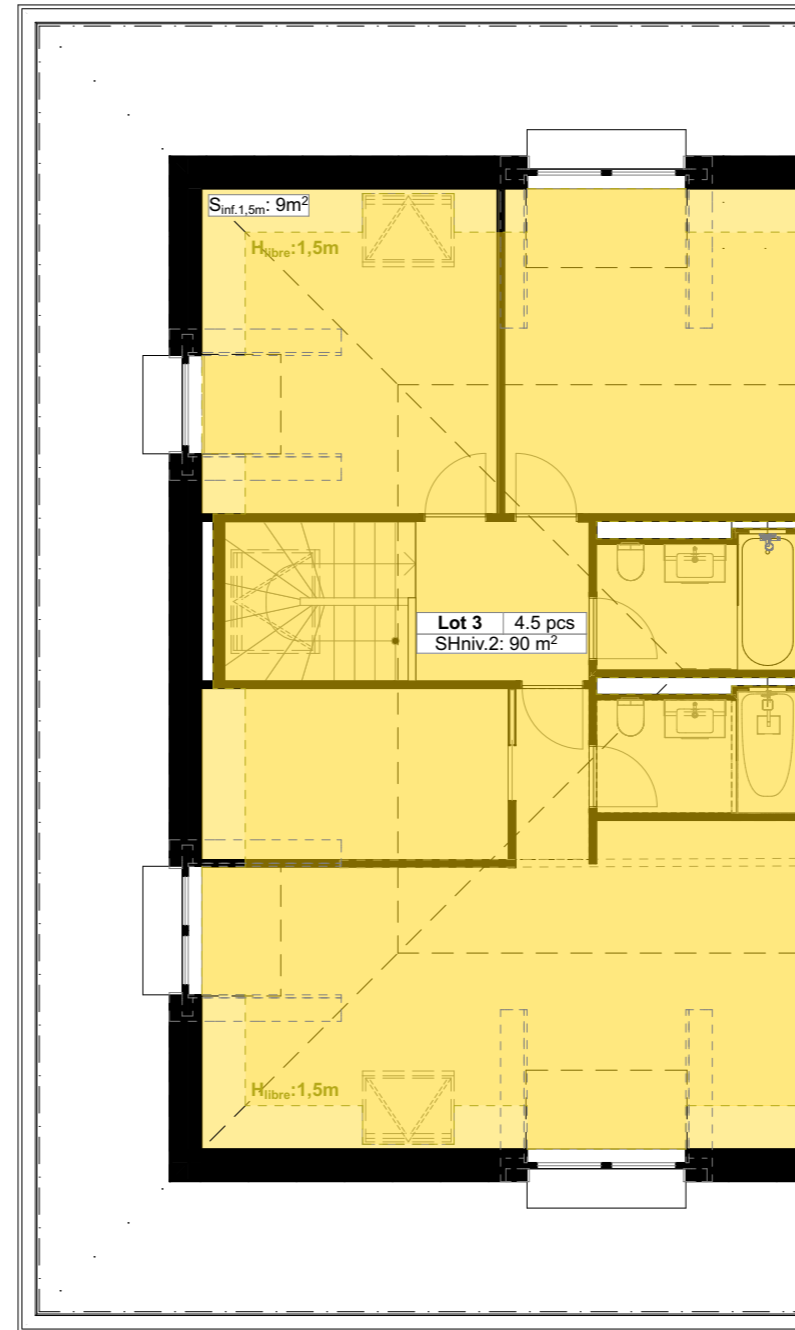
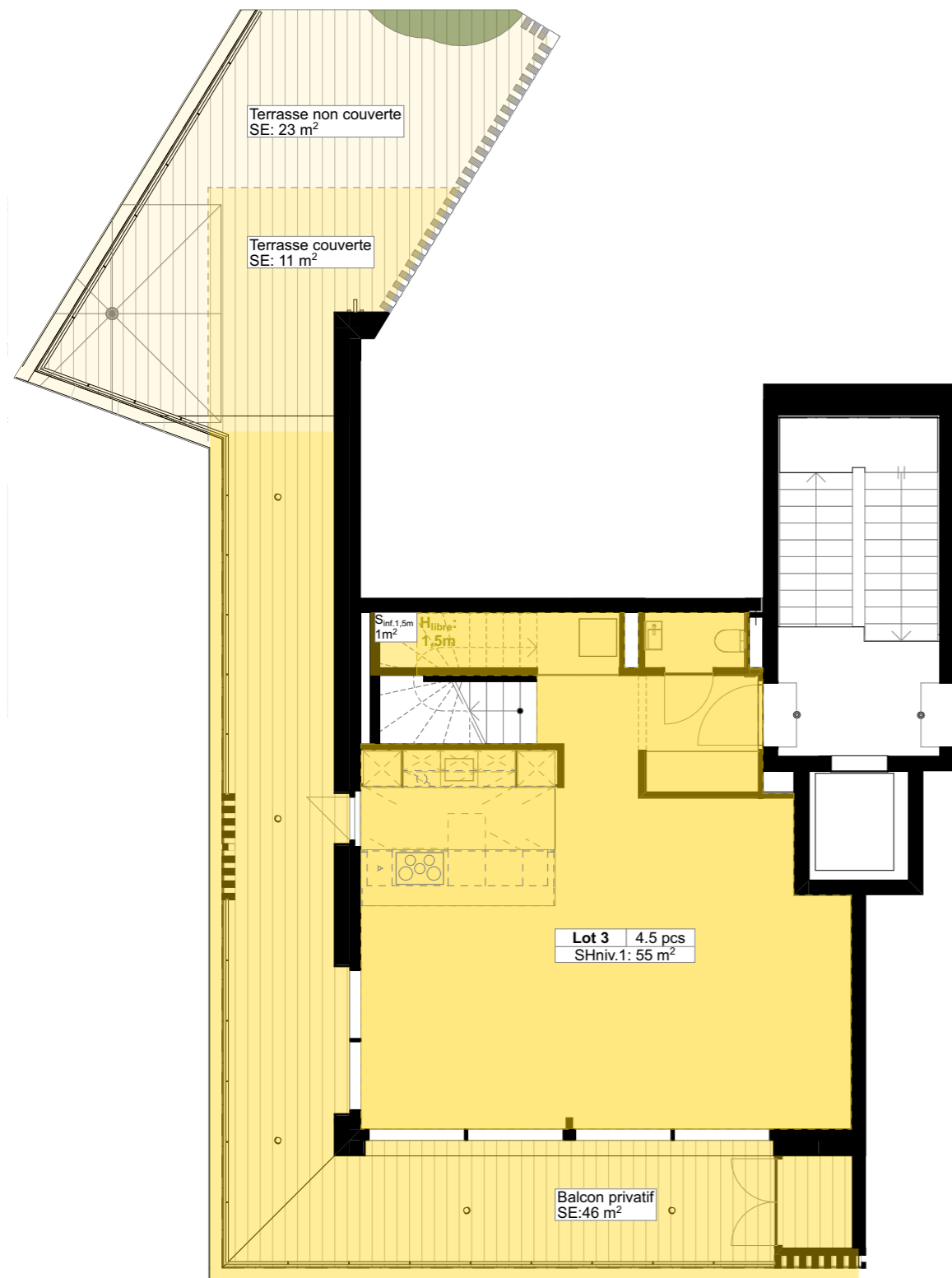
AVENUE FELIX CORNU 16, CORSEAUX

PLANS PPE \_ LOT 3

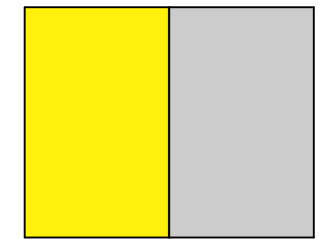


PROVISOIRE  
13.12.24

LOT 3 - 1<sup>ER</sup> ETAGE & COMBLES - 4.5<sup>PCS</sup>



Niveau 1



Niveau Combles

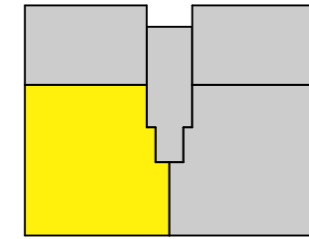
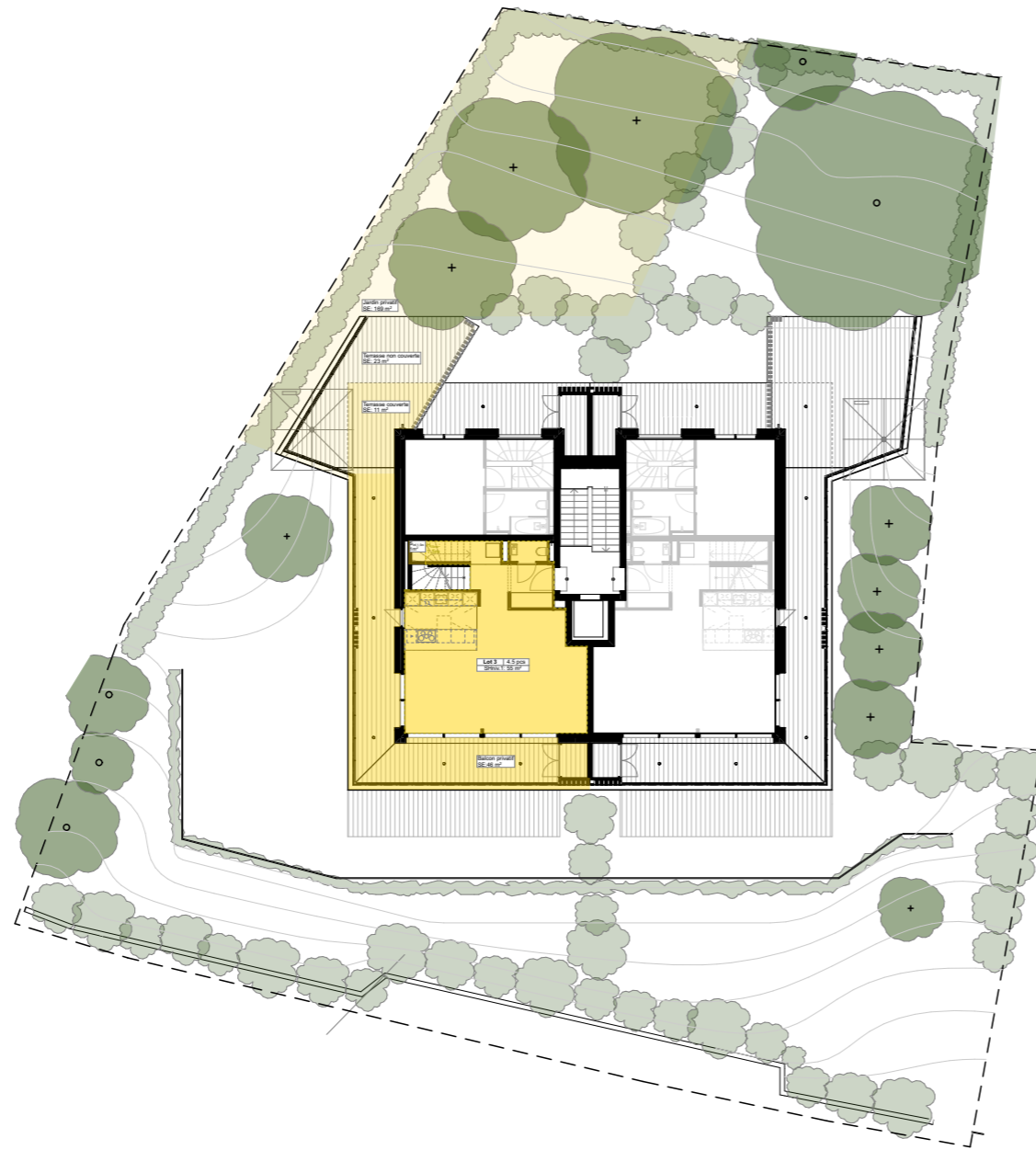
<b>Appartement SH</b>	<b>55+90= 145m<sup>2</sup></b>
<b>Surface au sol</b>	<b>55+1+90+9= 155m<sup>2</sup></b>
Terrasse couverte	11 m <sup>2</sup>
Terrasse non couverte	23 m <sup>2</sup>
Balcon	46 m <sup>2</sup>
Jardin	169 m <sup>2</sup>
Dépôt	23 m <sup>2</sup>
Box vélos	20 m <sup>2</sup>
Parking	2 pl. + 2pl.
<b>Surface de vente pondérée SVP</b>	<b>201,6 m<sup>2</sup></b>
<b>Surface totale</b>	<b>447,0 m<sup>2</sup></b>



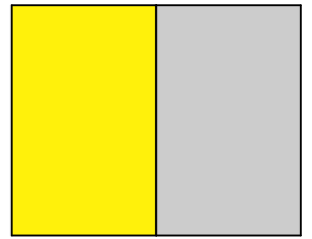


PROVISOIRE  
13.12.24

# LOT 3 - 1<sup>ER</sup> ETAGE & COMBLES - 4.5<sup>pcs</sup>



Niveau 1



Niveau Combles

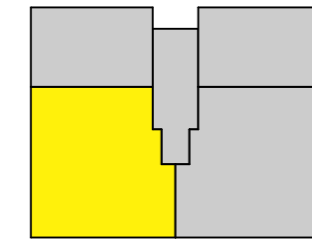
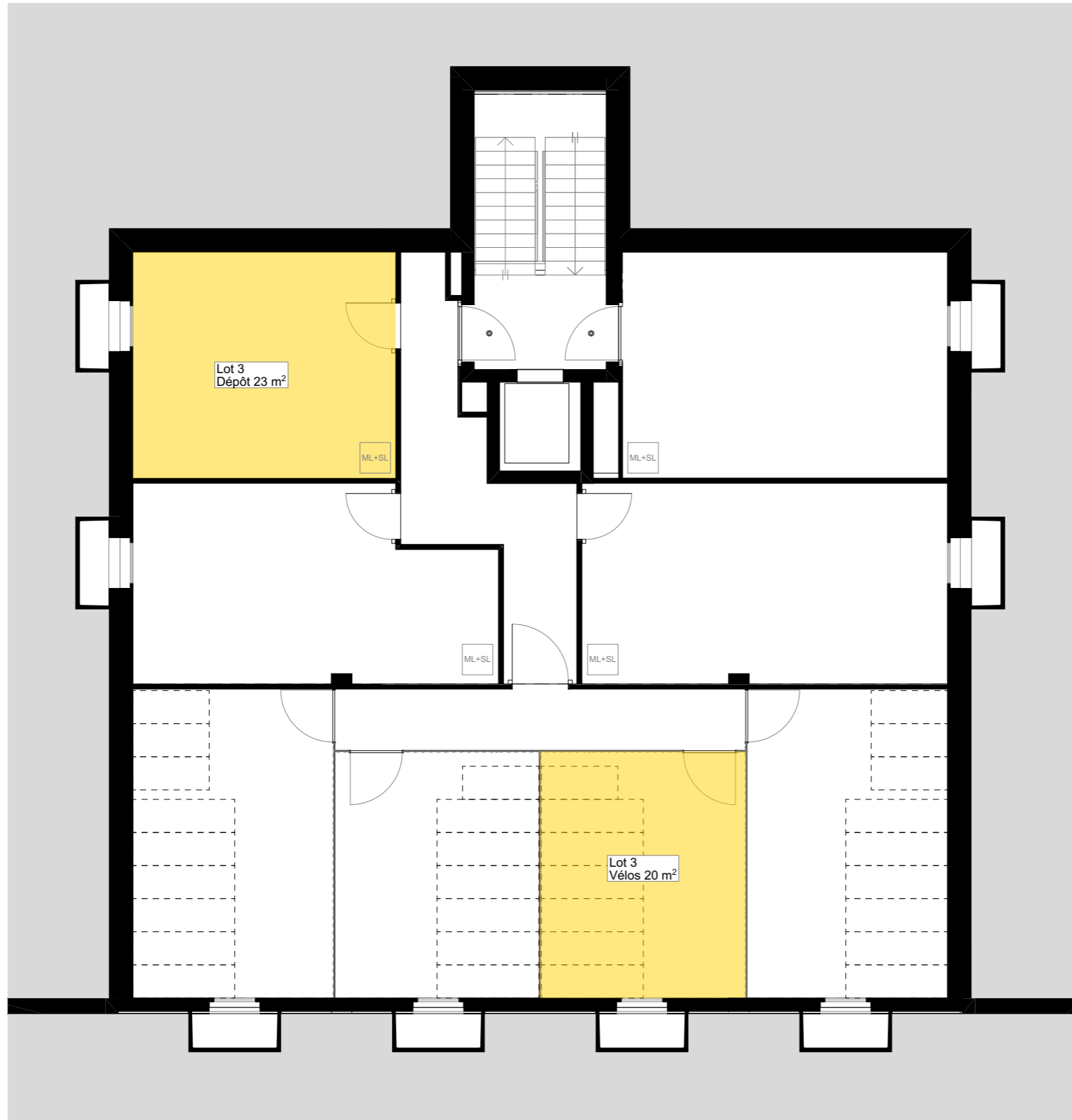
Appartement SH	145m <sup>2</sup>
Surface au sol	155m <sup>2</sup>
<b>Terrasse couverte</b>	<b>11 m<sup>2</sup></b>
<b>Terrasse non couverte</b>	<b>23 m<sup>2</sup></b>
<b>Balcon</b>	<b>46 m<sup>2</sup></b>
<b>Jardin</b>	<b>169 m<sup>2</sup></b>
Dépôt	23 m <sup>2</sup>
Box vélos	20 m <sup>2</sup>
Parking	2 pl. + 2pl.
<b>Surface de vente pondérée SVP</b>	<b>201,6 m<sup>2</sup></b>
<b>Surface totale</b>	<b>447,0 m<sup>2</sup></b>



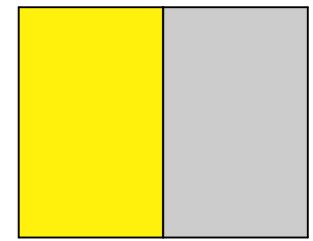
1m 10m

PROVISOIRE  
13.12.24

LOT 3 - 1<sup>ER</sup> ETAGE & COMBLES - 4.5<sup>pcs</sup>



Niveau 1



Niveau Combles

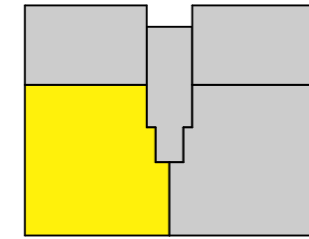
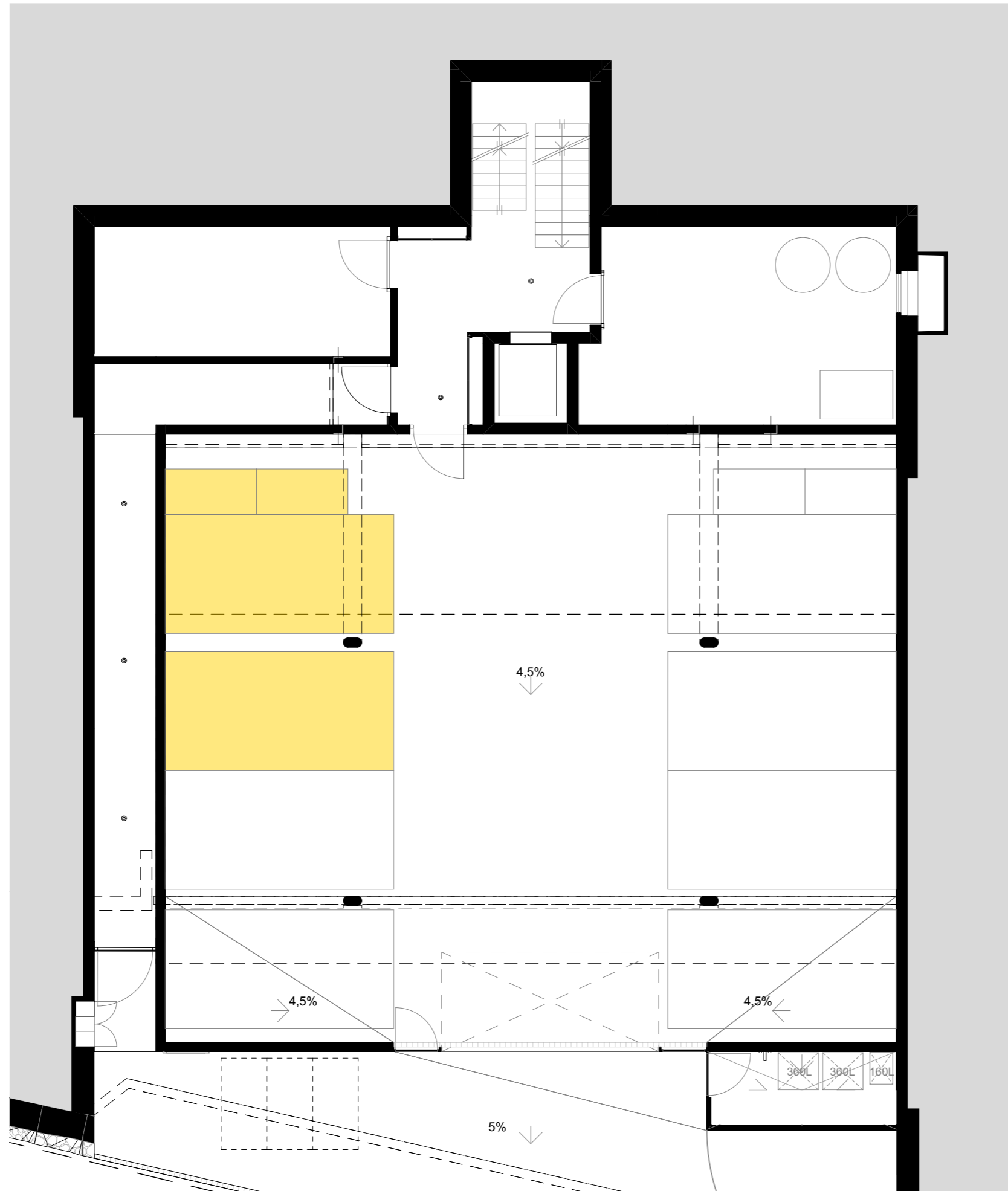
Appartement SH	145m <sup>2</sup>
Surface au sol	155m <sup>2</sup>
Terrasse couverte	11 m <sup>2</sup>
Terrasse non couverte	23 m <sup>2</sup>
Balcon	46 m <sup>2</sup>
Jardin	169 m <sup>2</sup>
<b>Dépôt</b>	<b>23 m<sup>2</sup></b>
<b>Box vélos</b>	<b>20 m<sup>2</sup></b>
Parking	2 pl. + 2pl.
<b>Surface de vente pondérée SVP</b>	<b>201,6 m<sup>2</sup></b>
<b>Surface totale</b>	<b>447,0 m<sup>2</sup></b>



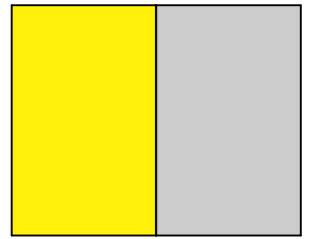
1m 5m

PROVISOIRE  
13.12.24

LOT 3 - 1<sup>ER</sup> ETAGE & COMBLES - 4.5<sup>PCS</sup>



Niveau 1



Niveau Combles

Appartement SH	145m <sup>2</sup>
Surface au sol	155m <sup>2</sup>
Terrasse couverte	11 m <sup>2</sup>
Terrasse non couverte	23 m <sup>2</sup>
Balcon	46 m <sup>2</sup>
Jardin	169 m <sup>2</sup>
Dépôt	23 m <sup>2</sup>
Box vélos	20 m <sup>2</sup>
<b>Parking</b>	<b>2 pl. + 2pl. moto</b>
Surface de vente pondérée SVP	201,6 m <sup>2</sup>
Surface totale	447,0 m <sup>2</sup>



1m 5m

PROVISOIRE  
13.12.24

*Vivez l'exception à Corseaux*

